

2020 Online Traffic Safety Course Workbook (used with on site class)

Workbook Page 3-6 Self-Appraisal

1. What does the term hydroplane mean?
2. you are traveling on a dry road at 40 MPH. A child runs out in front of you. How many feet will your vehicle travel before coming to a complete stop?
3. What affects your stopping distance?
4. What is the recommended safe following distance when a roadway is wet?
5. You should check your mirrors: a. Every 15 to 20 seconds b. Only when necessary c. Every 3-5 seconds d. None of the above
6. What safety precautions you should be aware of when stopping in a line of traffic? <hr/>

6. What safety precautions you should be aware of when stopping in a line of traffic?
7. Define each of the following: Perception Distance
Reaction Distance
Braking Distance
8. Where are the blind spots on the vehicle you normally drive?

9. Traffic safety experts caution driver to stay out of the blind spots of large vehicles, such as 18- wheel tractor trailers.

Where are these vehicles blind spots? Be specific.

10. You are approaching an intersection with the designated left turn lanes. From which lane should you make the left turn?

11. You are approaching a jaywalker (a pedestrian crossing the street outside of the crosswalk). What do you think is the safest practice to follow?

12. How can you determine your following distance?

13. How far ahead should you scan?

In Congested area?

On the open road?

14. How many feet per second does your vehicle cover when traveling at 60 MPH?

15. Your scanning ahead alerts you to a police vehicle on the side of the road with its emergency lights on. How should you handle this situation?

16. What are some examples if a distracted driver?

What precautions should you take when driving near a distracted driver?

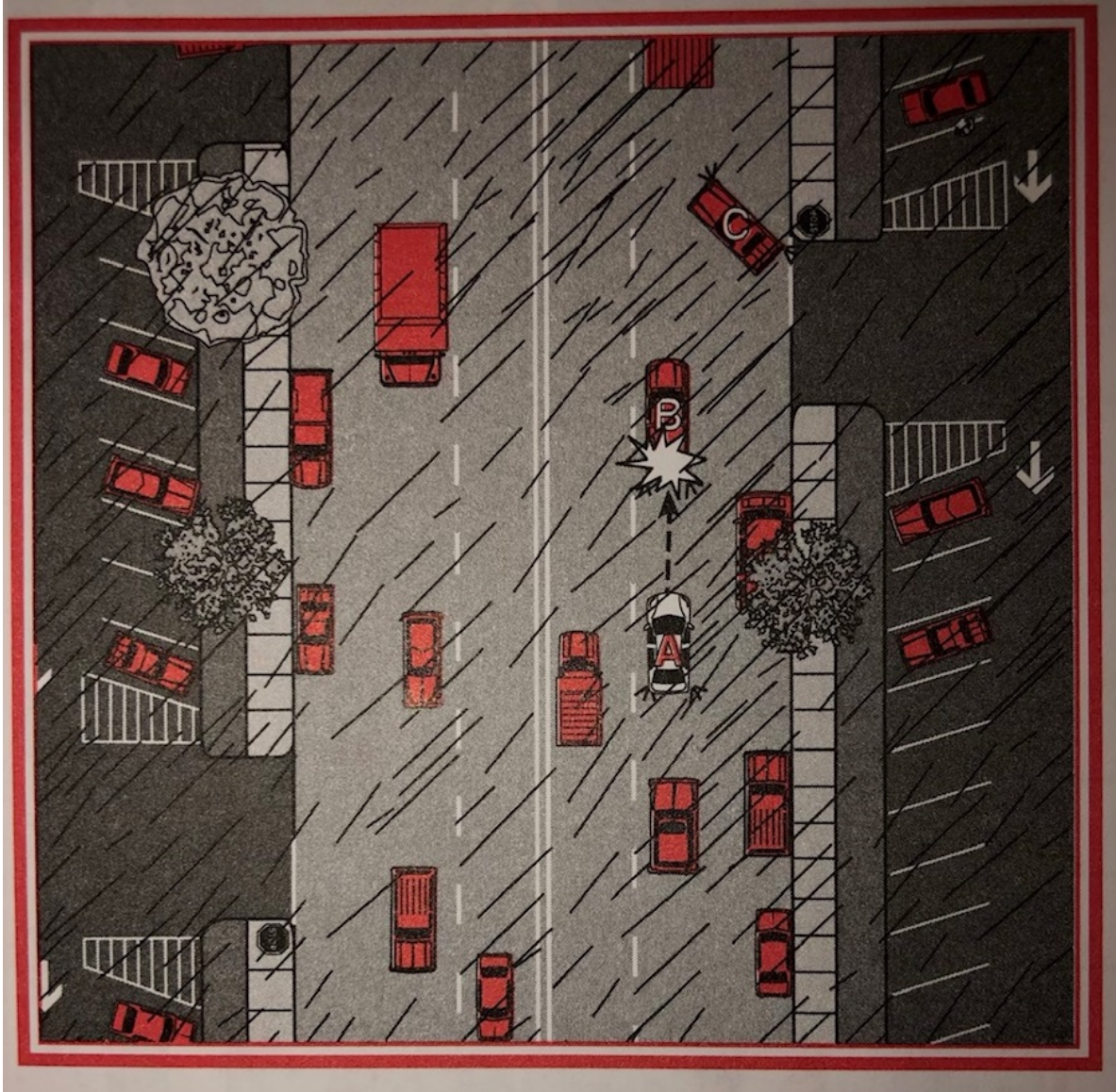
Session One – Before You Go?

1. What are some items you should check in pre-trip safety?
2. On the vehicle you operate what dashboard symbols and indicators are displayed?
What is the meaning of each?
3. What can you do to prevent loose objects from becoming a hazard while you are driving?
4. What are some other considerations you should keep in mind before starting to drive?
5. The front tires should have a minimum thread depth of 4/32 of an inch in the major grooves. What is the recommended method to check this treat depth?
6. Does the structure of the vehicle you normally drive create blind spots?
If so describe them:

Session Two – Essentials Part One

7. On an open roadway, how far ahead should you scan?
a. 2 to 3 seconds ahead
b. 12 to 15 seconds ahead
c. About $\frac{1}{4}$ second ahead
d. None of the above
8. In congested areas, you should scan about:
a. $\frac{1}{2}$ block ahead
b. 5 seconds ahead
c. 1 to $1\frac{1}{2}$ blocks ahead
d. Both a and b
9. Cushion of safety means:
a. Total stopping distance
b. Your braking distance
c. The area around your vehicle
d. The distance to the nearest traffic light
10. You can effectively communicate with others by:
a. Using your horn
b. Using directional signals
c. Establishing eye contact with other drivers
d. Both a and b
11. How does moving your foot over the brake assist you? _____
12. When stopping in a line of traffic, what are some safety considerations you should keep in mind?
13. How would you handle a jaywalker standing on the curb at the side of the road?

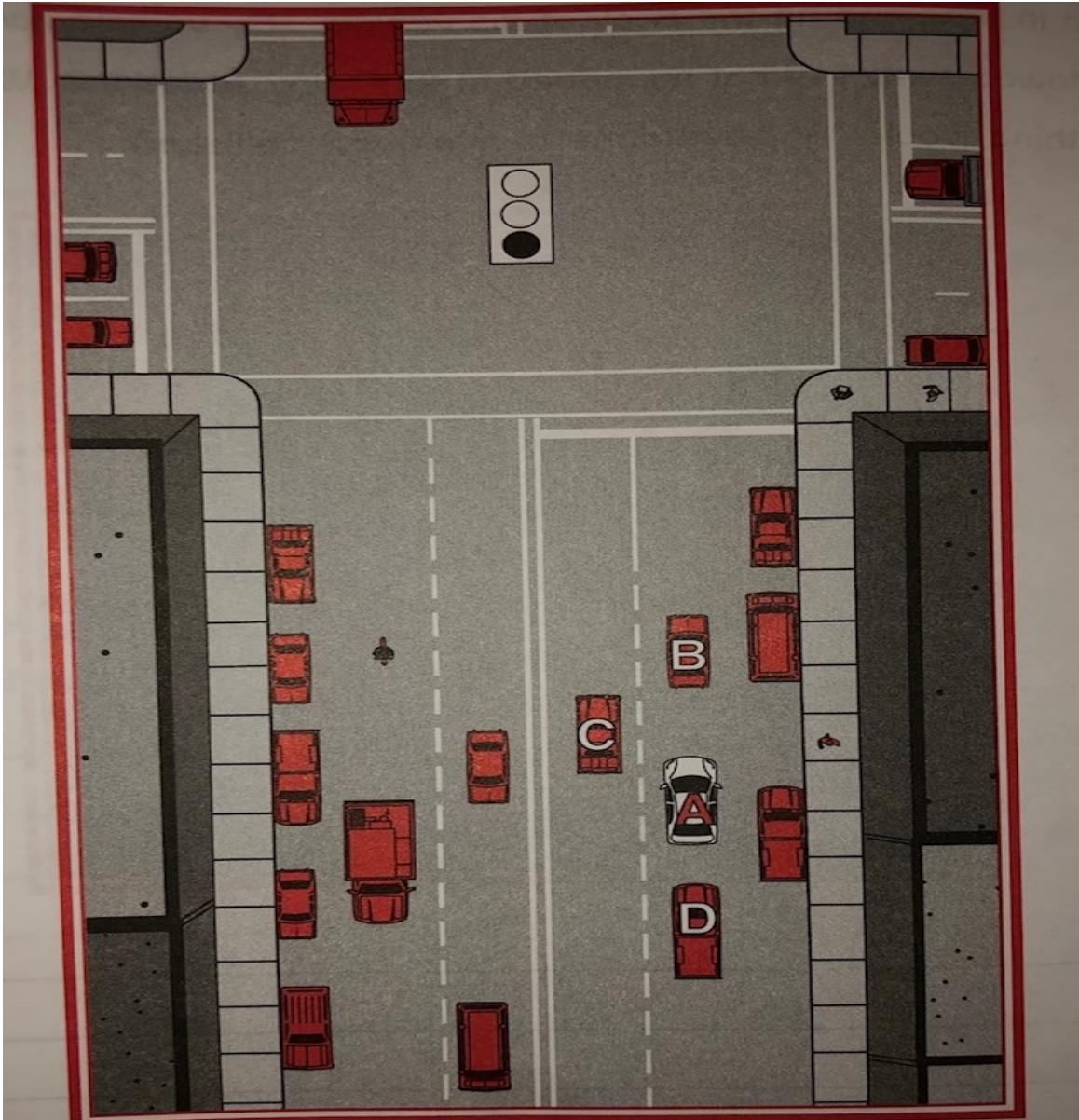
14. "I, (A)" was traveling behind vehicle "B" about three car lengths, just as I had learned in a driver safety course, when "B" suddenly jammed on the brakes. Unfortunately, I wasn't able to stop in time and hit the back of his vehicle. My vehicle had to be towed away."



What happened in this rainy situation?

What, if anything, could "A" have done to avoid this collision?

15. In this situation, "A" will be turning left at the next intersection. From his current position, what advice would you give "A"? Be as complete as possible.

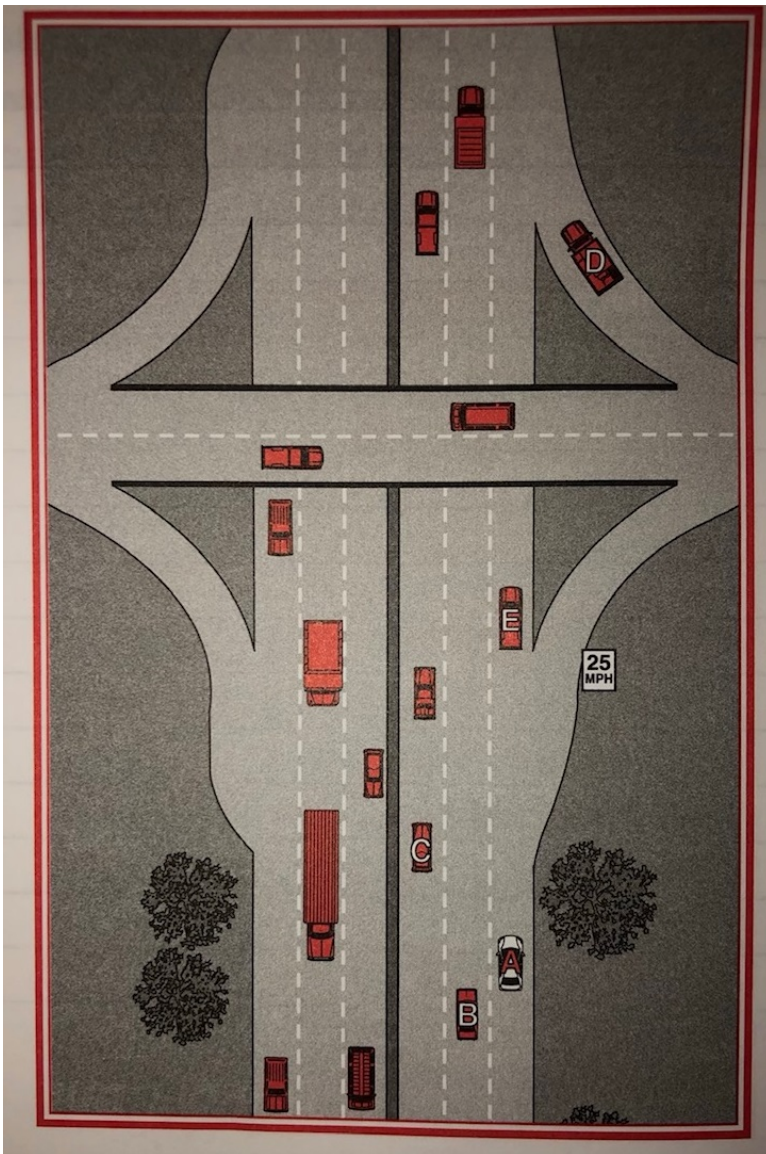


16. In this situation, “A” said that as the traffic signal turned green, he spotted the delivery vehicle “E” come to a stop and put on its hazard lights. “E’s” position and actions concerned “A”, and “A” decided to keep an eye on the delivery vehicle as he proceeded. However, after stopping for the red light, an ambulance “B” with its lights and sirens on entered the intersection. “A” and “B” collided. “A” stated that he was unaware of “B”.



If you were the driver of vehicle “A”, how would you have handled this situation?

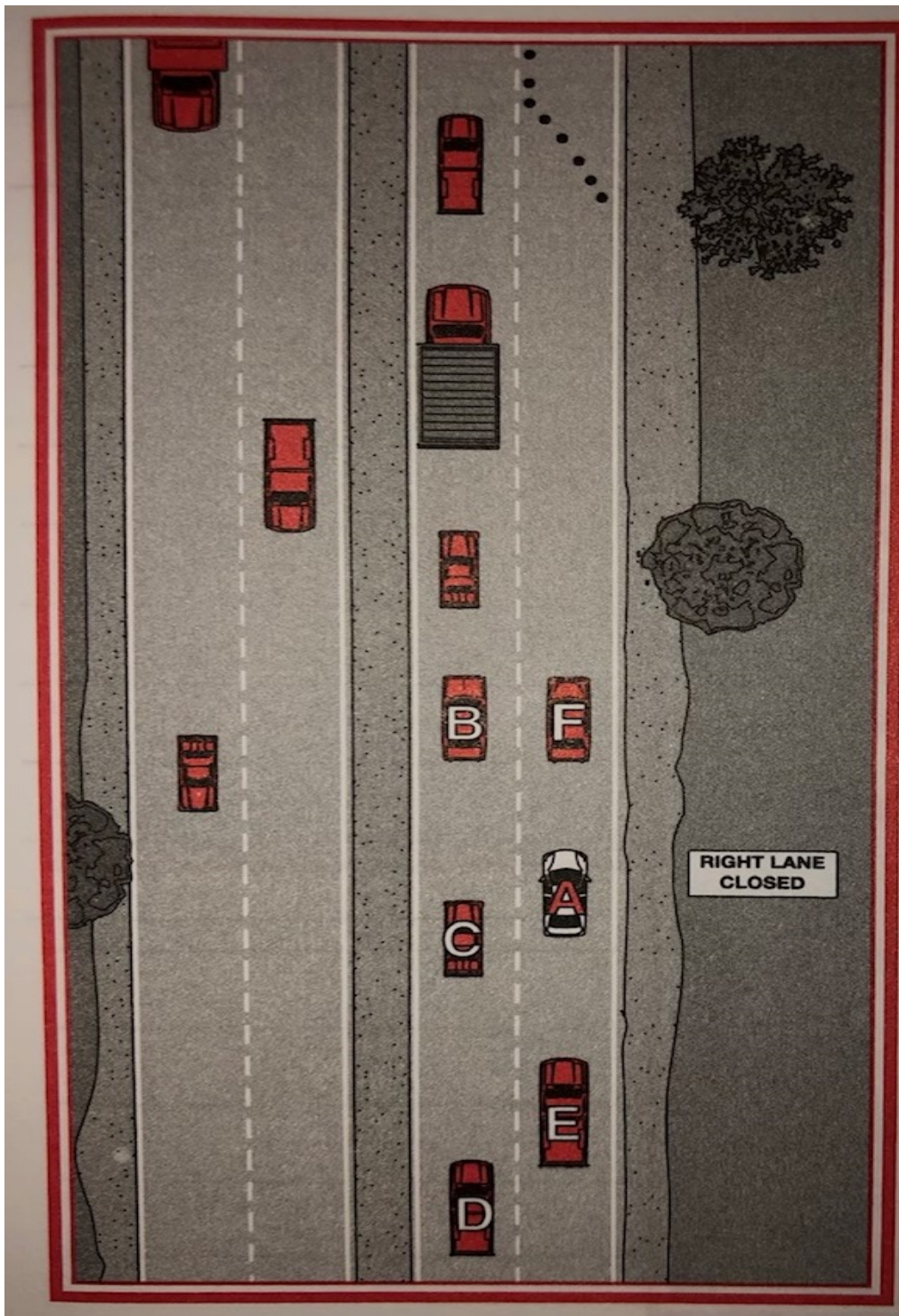
17. In this highway situation, consider the potential hazards that vehicle “A” faces.



What safety consideration should “A” keep in mind when exiting at the interchange?
What safety considerations should “A” keep in mind if “A” does not intend to exit at this interchange?

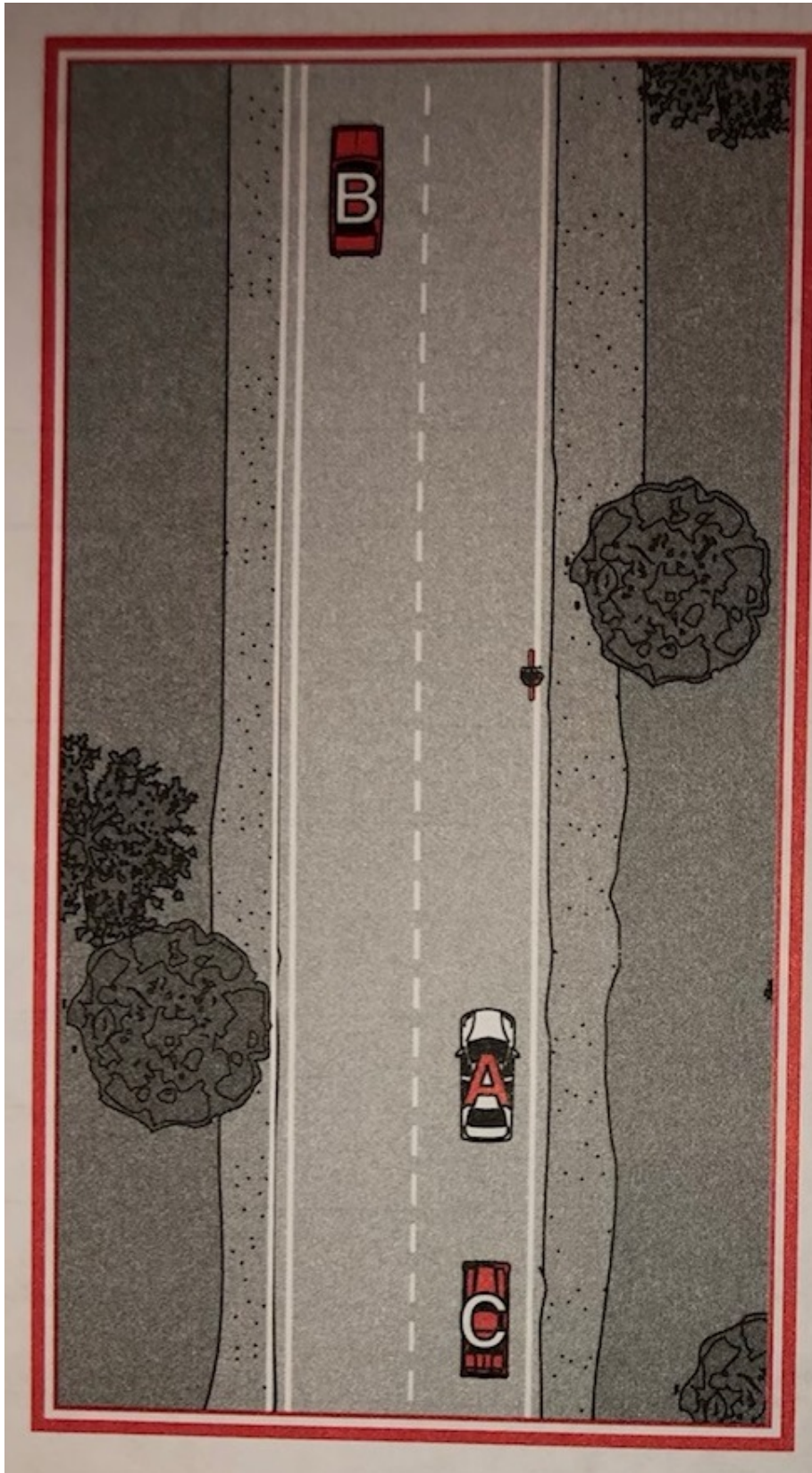
18. How can you determine if vehicle is in your blind spot?
19. How far ahead of a turn or lane change should you use your directional signals?
20. What are some considerations when using your signals on high speed roadways?

21. In this case "A's" scanning picks up a "Right Lane Closed" sign ahead. How far ahead should you be scanning in a situation such as this? Please talk through this situation and describe how you would handle it safely.

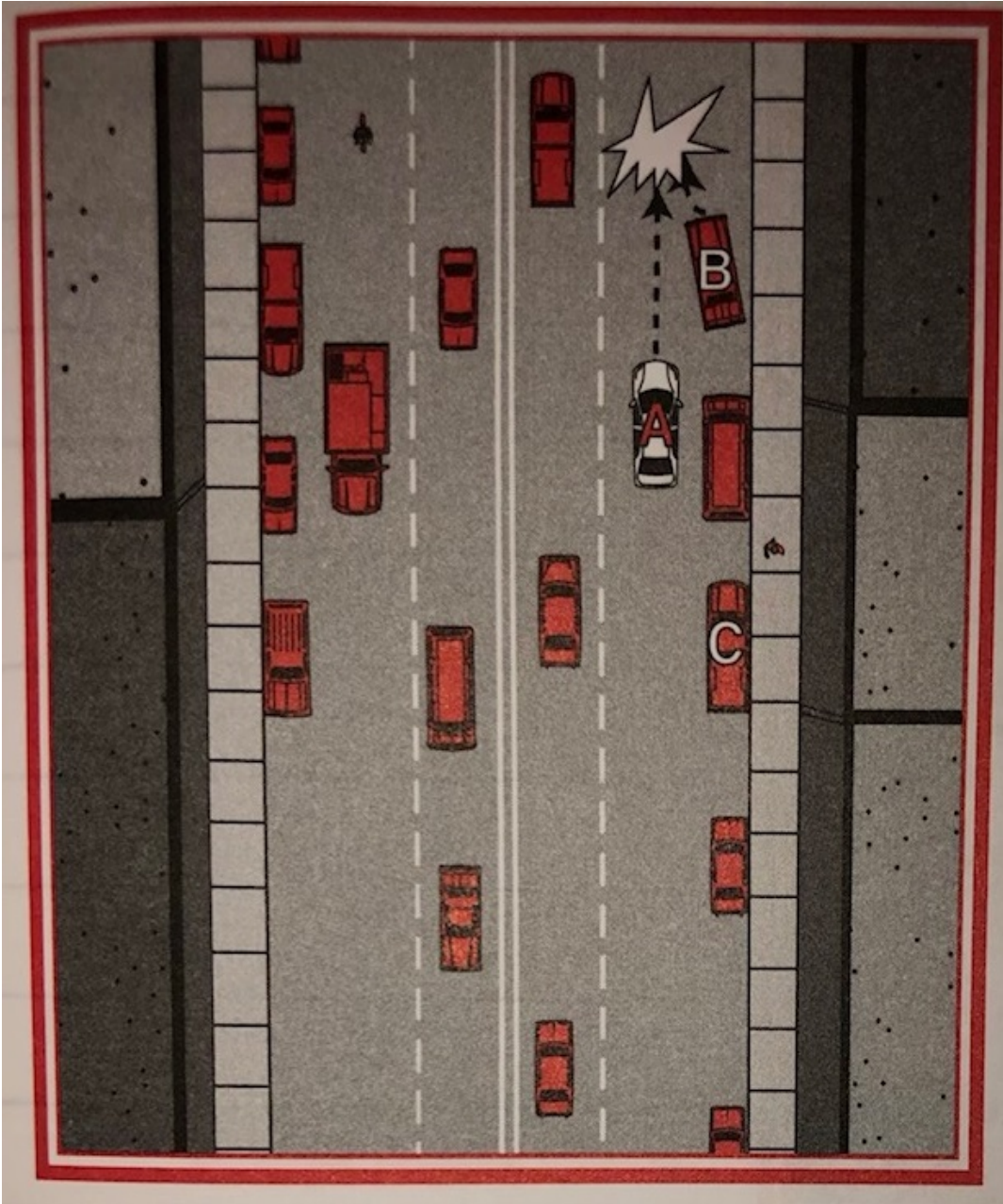


22. In this situation, Vehicle "D" is a police vehicle with its emergency lights on. Describe how each of these vehicles should handle this situation.

Vehicle "A" * Vehicle "B" * Vehicle "C"

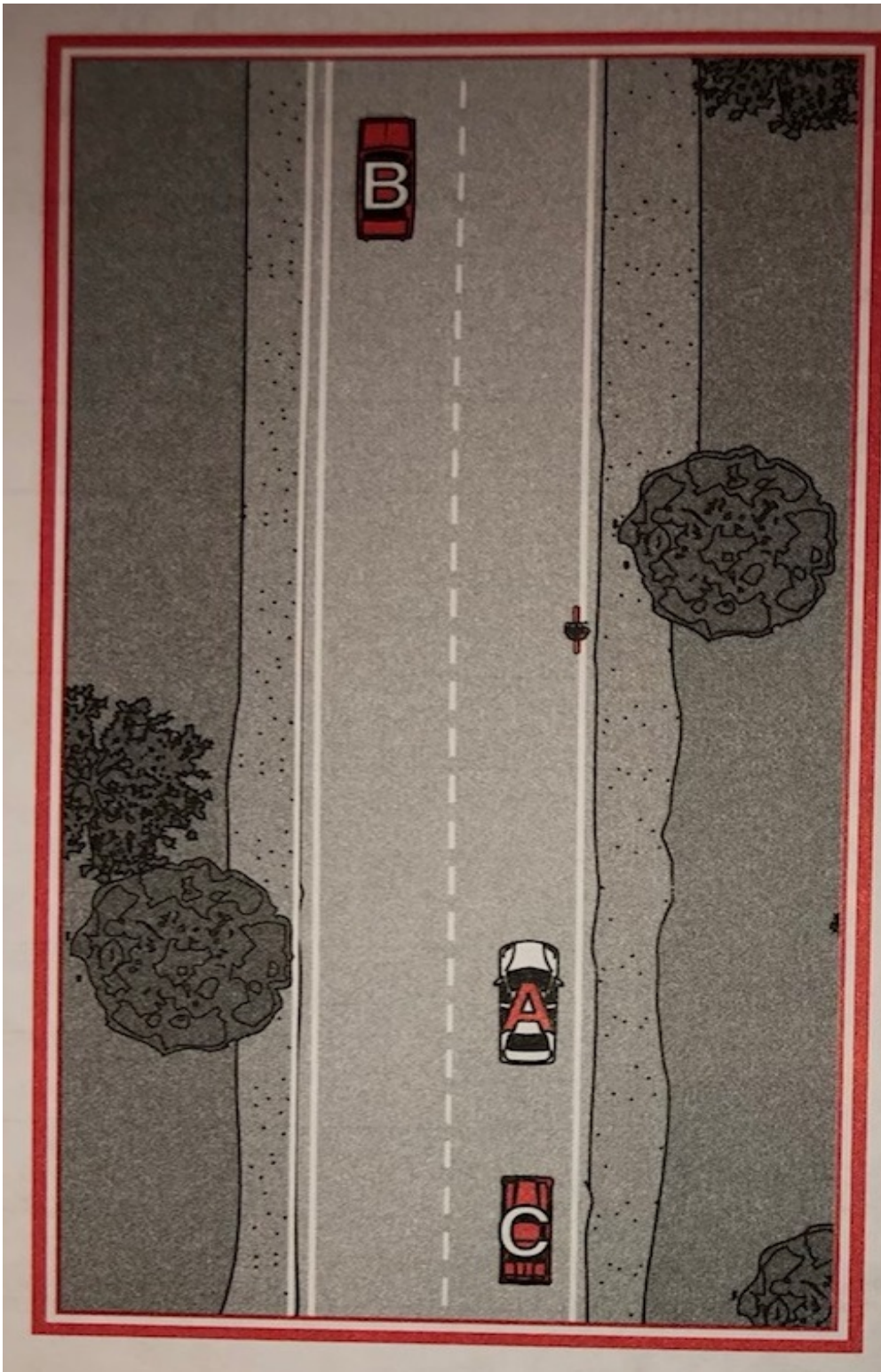


23. In this situation, “A” was driving in a congested area. As “A” reached for a cell phone that had fallen from the passenger seat, vehicle “B” pulled out in front of “A”. “A” said he was only distracted for a few seconds but nonetheless, collided with “B”. “A” was traveling at 30 mph before the collision. How far did “A” travel in those few seconds?



What could “A” have done to prevent this collision? Explain your answer.

24. In this situation, vehicles "A," "B" and "C" are approaching a bicyclist on the road. Describe how each of these vehicles should handle this situation.



25. In this situation, "A" was driving on an open roadway. As "A" looked to the left to watch a police vehicle with its lights on, "B" slowed to make a turn. When "A" looked back to the front, he couldn't stop in time and hit "B".

What happened in this situation?

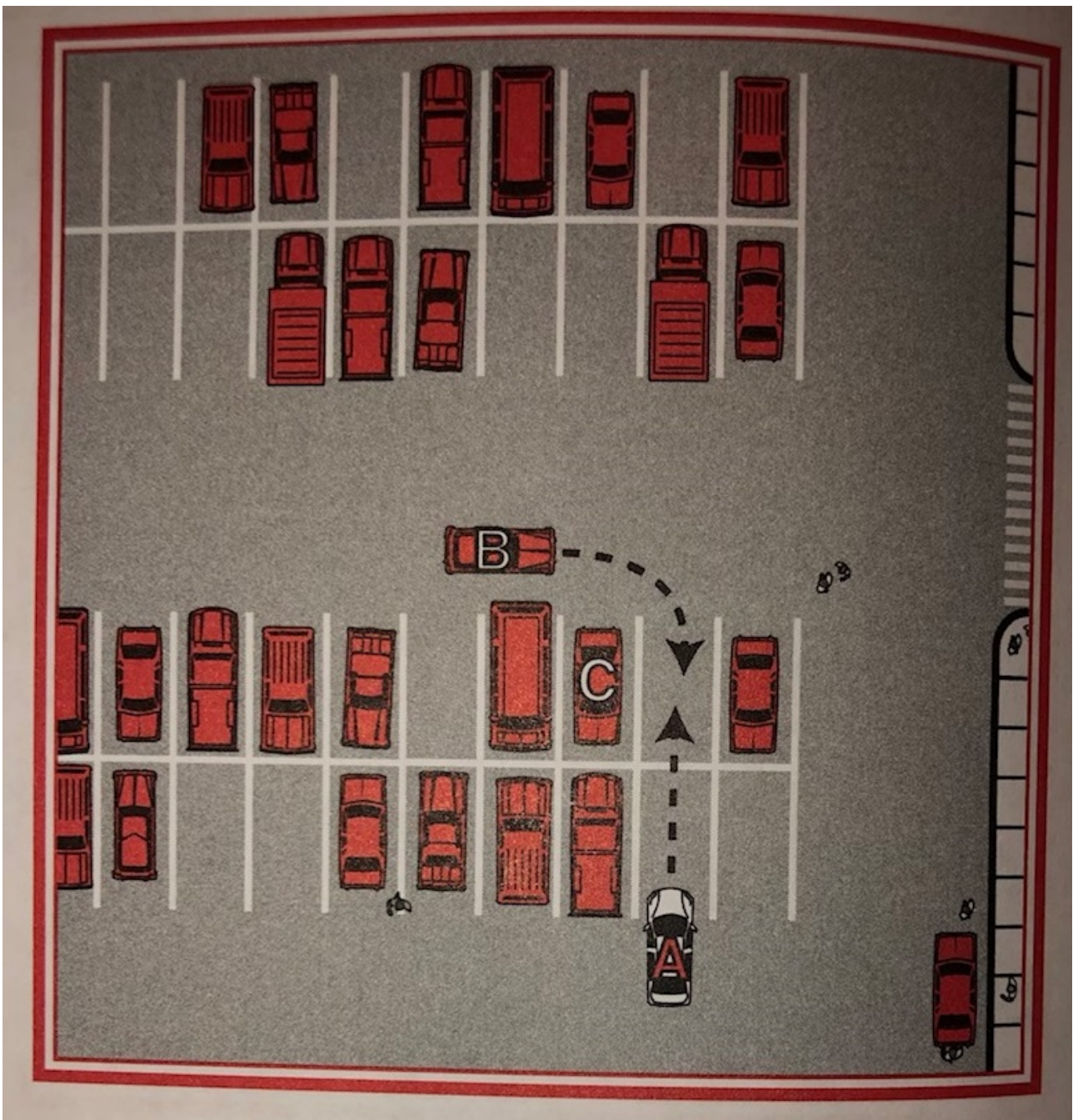
Have you seen or been involved in a "distracted driving" situation such as this?

If so, describe it below. How would you have handled this situation?

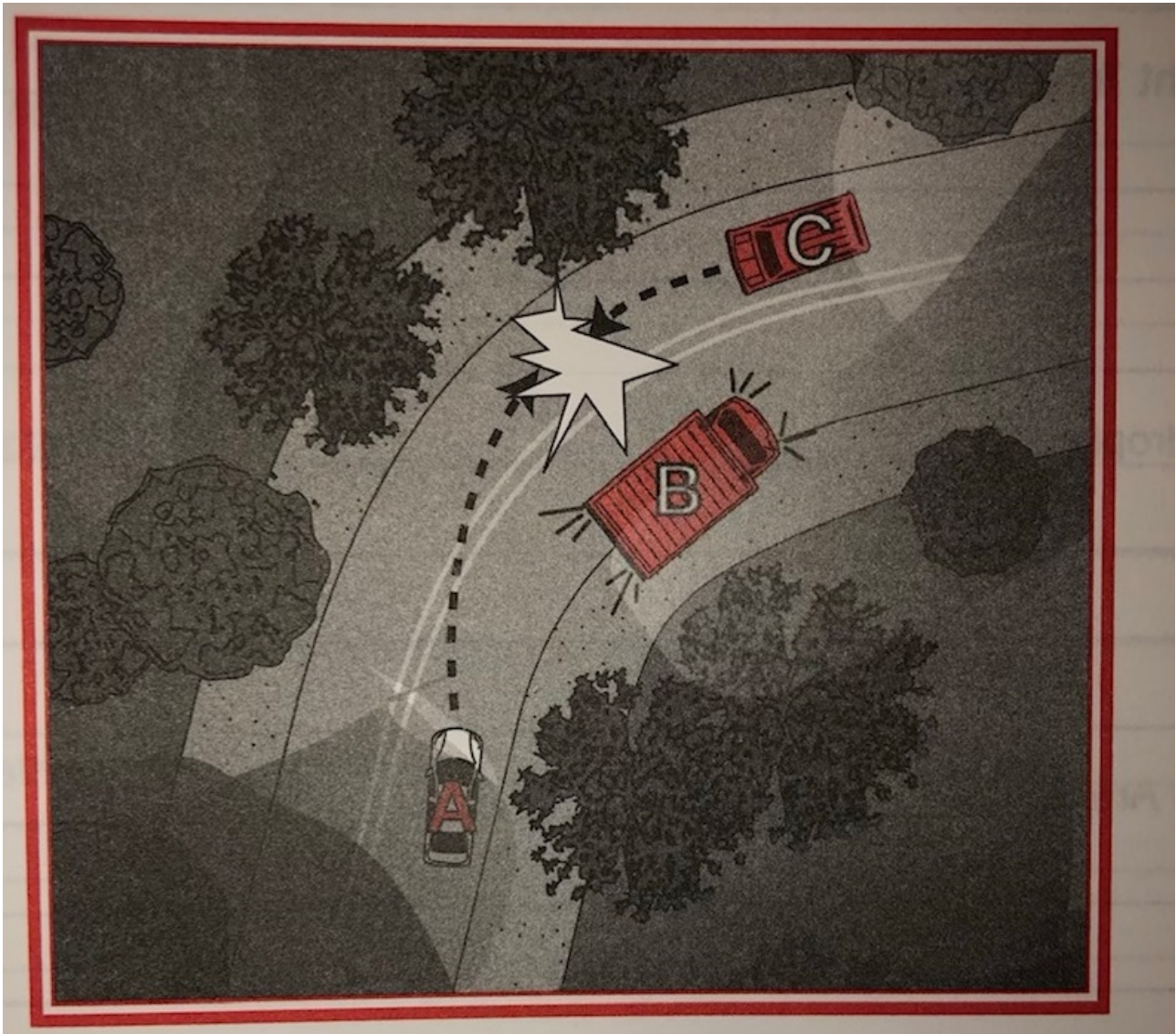


26. "Someone told me to avoid backing if possible, so I "A" got into a habit of pulling through to an open space in parking lots so I can just pull forward when leaving. When I did, "B" approached from out of nowhere and we almost collided."

What advice would you give to both "A" and "B" in this situation?



27. In this situation, “A” was traveling at the speed limit. The roadway was dry and there was little traffic, but there was heavy fog. “A” entered a curve and had to avoid a postal vehicle “B”, “A” side swiped “C” approaching in the opposite lane.



What could “A” have done to avoid this collision?

28. For each topic, list safety considerations drivers should keep in mind.
Backing
Right Turn On Red
Hydroplaning
Toll Areas
Alcohol/Drugs
Parking Lots
Use of Mirrors
Intersections
Bicyclists
Left Turns
Safety Belts and Airbags
Railroad Crossings
School Busses
What to do When Involved in a Collision
Driving in Adverse Weather Conditions
Explain each of the following. How are they different from one another?
Distracted Driving
Aggressive Driving
Road Rage

Child Restraint Information:

- Place all children in the back seat
- If transporting a child under the age of thirteen in the front seat is unavoidable, take the following steps:
 - Use a child restraint device that is appropriate for his or her age and size
 - Make sure the child is positioned with his or her back against the seat back as far from the air bag as possible
 - Turn the passenger side air bag off

Green Issues To Consider:

- Park in areas that provide shade
- Try to consolidate your trips
- If possible, use car pool or public transportation
- Inflate tires to proper pressure
- Accelerate and brake smoothly
- Reduce items that increase wind resistance, such as luggage carriers on top when not in use
- Avoid idling when possible
- Remove excess items from trunk

Signs

List what it is for:

